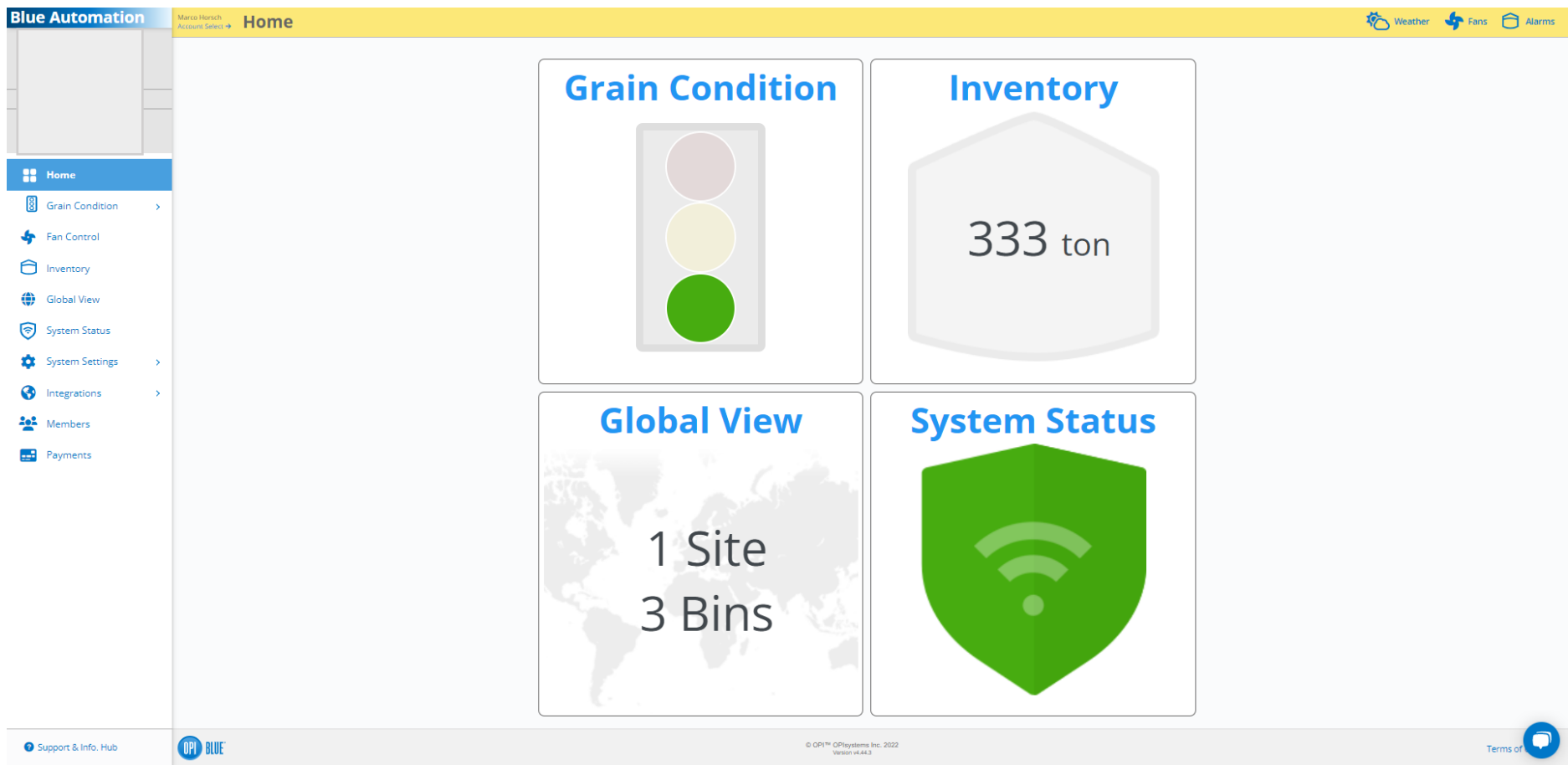


General information about Fan Control

Fruchtarten:

Barley	Gerste
Wheat	Weizen
Canola	Raps
Rye	Roggen
Corn	Körnermais
Soybean	Sojabohnen
Chickpea	Kichererbsen
Lentil	Linsen

Fördern, lagern, trocknen, managen. Anders einfach.



After successfully logging in, you will see this start page.

Graphic 1: The 'Grain Condition' traffic light system allows you to quickly recognise the condition of your stored goods

Graphic 2: 'Inventory' indicates how many tonnes of stored goods you have stored at the location; this value is only a rough guide

Graphic 3: In the 'Global View' view, you can see how many locations or silos are stored

Graphic 4: The 'System Status' traffic light system allows you to recognise the status of your system

Blue Automation Marco Hörsch Account Select → **Fan Control** Weather Fans Alarms

Customize

Name	Mode	State	Fans & Heaters	Grain Type	Plenum Temperature	Plenum Pressure	Average Grain Moisture	Ambient EMC	Average Grain Temperature	Maximum Grain Temperature	Ambient Temperature	Plenum Rh	Plenum EMC	Fan Warming	Heater Warming
1	2	3	4	5	6	7	8	9	10	11	12	13	14	15	16
Silo 1	MANUAL Control Info	Fan Off Heater Off	Start Fan Fan Timer Start Heater Heater Timer	Barley	29.4°C	-0.1wc	N/A	8.5%	N/A	N/A	30.4°C	39.6%	Predicted: Fan: 7.9% Heater: 3.8%	2.0°C	20.0°C
Silo 2	MANUAL Control Info	Fan Off Heater Off	Start Fan Fan Timer Start Heater Heater Timer	Corn	24.6°C	-0.0wc	13.3%	9.0%	18.3°C	18.5°C	30.4°C	52.7%	Predicted: Fan: 8.4% Heater: 4.5%	2.2°C	20.0°C
Silo 3	AUTOMATIC - NAD Control Info	Fan Off Heater Off	Start Fan Fan Timer Start Heater Heater Timer	Wheat	24.1°C	-0.1wc	10.1%	9.3%	25.3°C	28.4°C	30.4°C	54.3%	Predicted: Fan: 8.6% Heater: 4.5%	2.4°C	20.0°C

The 'Fan Control' tab takes you to the following page

- Name of the storage room (e.g. silo, hall, etc.)
- Current control mode of the fan
- Current status of the fan or heater
- The fan or heater can be started manually and a timer can be set here
- 'Grain Type' indicates which fruit is currently stored, must be actively set, see (Instructions: First steps in OpiBlue)
- Shows the temperature under the ventilation floor
- Indicates the air pressure in 'inches of water column' below the ventilation floor
- Average humidity of the stored goods
- Current moisture equalisation (based on the weather station)
- Average temperature of the stored goods
- Maximum temperature of the stored goods
- Current outside temperature measured by the weather station at the silo
- Relative humidity under the ventilation floor
- Equalising humidity below the ventilation floor incl. fan heating
- Actual temperature rise due to the pressure of the fan
- Current temperature heating of the air by the heater (optional)

Fördern, lagern, trocknen, managen. Anders einfach.

Blue Automation

Marco Horsch Account Select

Fan Control

Weather Fans Alarms

Customize

Name	Mode	State	Fans & Heaters	Grain Type	Plenum Temperature	Plenum Pressure	Average Grain Moisture	Ambient EMC	Average Grain Temperature	Maximum Grain Temperature	Ambient Temperature	Plenum Rh	Plenum EMC	Fan Warming	Heater Warming
Siloanlage Sitzenhof															
Silo 1	AUTOMATIC - AERATION	Fan Off Heater Off	Start Fan Fan Timer Start Heater Heater Timer	Barley	29.4°C	-0.1wC	N/A	8.6%	N/A	N/A	30.6°C	41.1%	Predicted Fan: 8.0% Heater: 3.8%	2.0°C	20.0°C
Silo 2	MANUAL	Fan Off Heater Off	Start Fan Fan Timer Start Heater Heater Timer	Corn	24.6°C	-0.0wC	13.3%	9.1%	18.3°C	18.5°C	30.6°C	54.6%	Predicted Fan: 8.5% Heater: 4.6%	2.2°C	20.0°C
Silo 3	AUTOMATIC - NAD	Fan Off Heater Off	Start Fan Fan Timer Start Heater Heater Timer				10.1%	9.4%	25.3°C	28.4°C	30.6°C	56.3%	Predicted Fan: 8.6% Heater: 4.6%	2.4°C	20.0°C

Silo 1

Fan Status: Off
 Fan Status Date: Feb 21 2022 8:03 AM
 Heater Status: Off
 Heater Status Date: Feb 21 2022 8:03 AM

Okay

Page 1 of 1

Support & Info. Hub

© OPI™ OPIsystems Inc. 2022 version v4.4.3

Terms of Use

Further information can be found behind the ‘i’ in the ‘State’ tab

Fan status = current status of the fan (on or off)

Fan Status Date = date when the fan was last switched on or off

Heater status = current status of the heater (on or off)

Heater Status Date = date when the heater was last switched on or off

Fördern, lagern, trocknen, managen. Anders einfach.

Blue Automation

Marco Horlich Account Select → Fan Control

Weather Fans Alarms

Customize

Name	Mode	State	Fans & Heaters	Grain Type	Plenum Temperature	Plenum Pressure	Average Grain Moisture	Ambient EMC	Average Grain Temperature	Maximum Grain Temperature	Ambient Temperature	Plenum Rh	Plenum EMC	Fan Warming	Heater Warming
Siloanlage Sitzenhof															
Silo 1	AUTOMATIC - AERATION Control Info	Fan Off Heater Off	Start Fan Fan Timer Start Heater Heater Timer	Barley	29.4°C	-0.1wC	N/A	8.6%	N/A	N/A	30.6°C	41.1%	Predicted Fan: 8.0% Heater: 3.8%	2.0°C	20.0°C
Silo 2	MANUAL Control Info	Fan Off Heater Off	Start Fan Fan Timer Start Heater Heater Timer	Corn	24.6°C	-0.0wC	13.3%	9.1%	18.3°C	18.5°C	30.6°C	54.6%	Predicted Fan: 8.5% Heater: 4.6%	2.2°C	20.0°C
Silo 3	AUTOMATIC - NAD Control Info	Fan Off Heater Off	Start Fan Fan Timer Start Heater Heater Timer					4%	25.3°C	28.4°C	30.6°C	56.3%	Predicted Fan: 8.6% Heater: 4.6%	2.4°C	20.0°C

Control Information

Control Information: B1. Fans OFF; Waiting to start Aeration control because (III) Waiting for fan-off plenum pressure sample (expected within ~15 minutes) (IV) Waiting for grain temperature readings (expected within ~60 minutes).

Control Information Date: Jul 25 2022 11:26 AM

Okay

Page 1 of 1

Support & Info. Hub

© OPI™ OPIsystems Inc. 2022 Version: v4.44.3

Terms of

Control information can be found behind the 'Control Info' in the 'Mode' tab

Here you will find information why the fan or heater (optional) is switched on or off. You will also find the date and time at which a change was made. You can only confirm this window with 'Okay'. To make any settings here, please read the other instructions.

Fördern, lagern, trocknen, managen. Anders einfach.